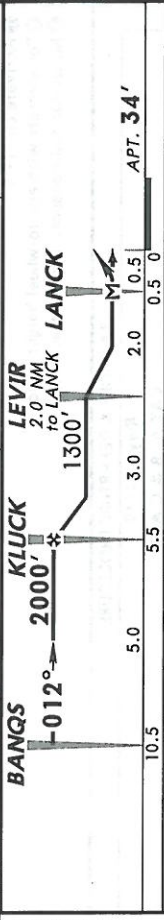
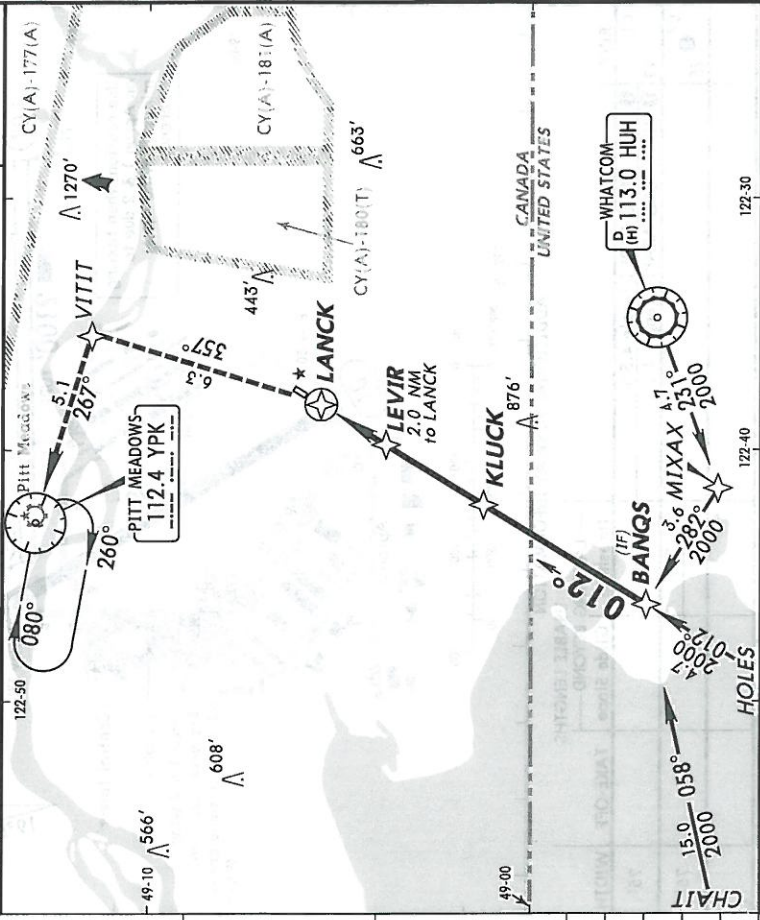


| | | | | |
|--|----------------------------------|---|---|------------------|
| *ATIS 124.5 | VICTORIA Terminal (ARR) 132.7 | *LANGLEY Tower MF (within 3 NM) 119.0 | LANGLEY Traffic MF (within 3 NM) 119.0 when Twr Inop. | *Ground 121.9 |
| RNAV | Final Apch Crs 012° | Minimum Alt (CONDITIONAL) 2000' (1966') | MDA (H) Refer to minimums | Apt Elev 34' |
| <p>MISSED APCH: Climb direct to VITIT on track 357°. LEFT turn direct YPK VOR on track 267°. Maintain 2000'. Hold on inbound track 080° (Max 175 kts).</p> | | | | |
| <p>Alt Set: INCHES Trans level: FL 180</p> <p>1. SAFE ALTITUDE WITHIN 100 NM 12,800'. 2. When using Abbotsford altimeter setting, add 50' to all procedure altitudes. 3. Verify runway unobstructed when A/G advisory not available. 4. Pilot controlled lighting 119.0.</p> | | | | |



| | | | | | | | |
|-------------|--|---|-----|---------------|----------------|---------|---------|
| MAP at LANC | Lighting - Refer to Airport Chart | ↑ | -D→ | VITIT on 357° | CIRCLE-TO-LAND | | |
| | | | | | MDA (H) | | |
| | | | | | A 90 | B 120 | C 140 |
| | | | | | Max Kts | D | |
| | | | | | 680' (646')-2 | NA | |

CYNJ

Aprt Elev 34'
N49 06.1 W122 37.8

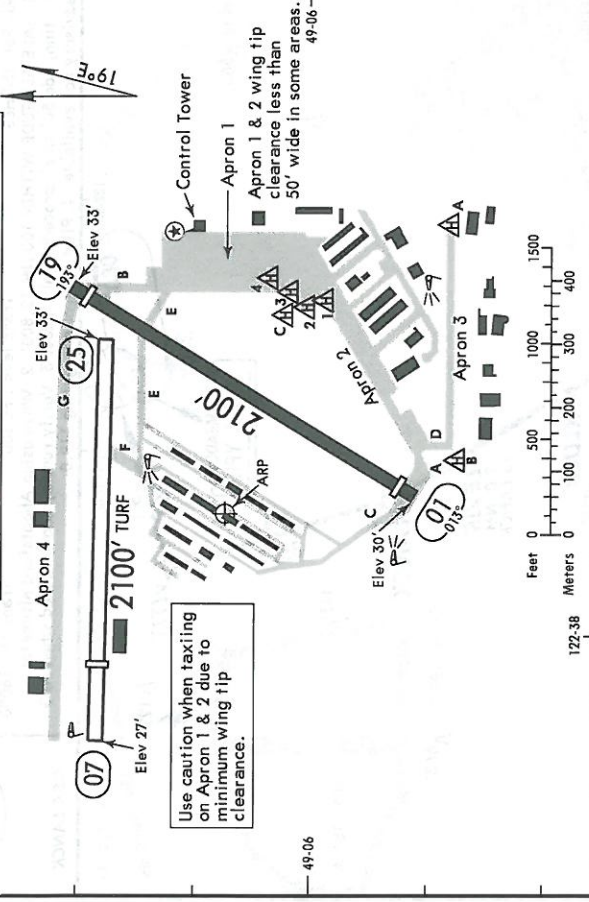
JEPPESEN

6 MAR 09 (12-1) EFT 12 MSEP

LANGLEY, BC
LANGLEY REG

| | | | | |
|-------|-----------------|-----------------------|----------------------------------|-------------------------|
| *ATIS | *LANGLEY Ground | *Tower | LANGLEY Traffic MF (within 3 NM) | VICTORIA Terminal (DEP) |
| 124.5 | 121.9 | MF (within 3 NM) 19.0 | 119.0 when Twr inop. | 132.7 |

122-38
CAUTION: Trees to 100' AGL 250' southeast of pad B. Only pilots familiar with this airport during daylight hours should use the airport during hours of darkness. Airport restricted to a max weight of 12,500 lbs except with airport operator's authorization. Occasional glider activity to 2500' above sea level.



Use caution when taxiing on Apron 1 & 2 due to minimum wing tip clearance.

| RWY | ADDITIONAL RUNWAY INFORMATION | | | USABLE LENGTHS | |
|-----|-------------------------------|--------|-------------|----------------|-------|
| | Threshold | BEYOND | GLIDE SLOPE | TAKE-OFF | WIDTH |
| 01 | ① MIRL ② PAPI-L (angle 4.5°) | 2000' | 75' | | |
| 19 | ① MIRL ② APAPI-L (angle 4.0°) | 1700' | 75' | | |
| 07 | ⑤ 25 | | | | |

- ① Activate on 119.0.
- ② For aircraft with eye-to-wheel height up to 10'.
- ③ No winter maintenance. Rwy soft when wet.

| TAKE-OFF & DEPARTURE PROCEDURE | |
|---|-------------------|
| Rwys 01/19 | CAT A, B & C ACFT |
| Climb visual over airport to 900'. Intercept R-328 inbound to HUH VOR. Maintain 2000' or as assigned. | |
| A | 1 |
| B | 1 1/2 |
| C | 2 |
| D | NA |